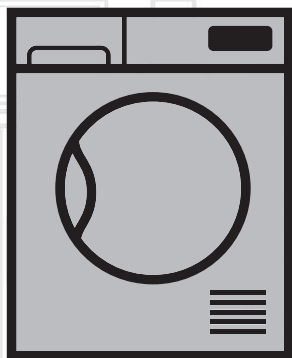


# Dryer

## User Manual



DCU 8230

DCSC 821 W

DCUR 801 W

DCUR 801 S

EN

CE

**beko**

2960310329\_KM/120117.1339

# Please read this user manual first!

Dear Customer,

Thank you for preferring a Beko product. We hope that your product which has been manufactured with high quality and technology will give you the best results. We advise you to read through this manual and the other accompanying documentation carefully before using your product and keep it for future reference. If you transfer the product to someone else, give its manual as well. Pay attention to all details and warnings specified in the user manual and follow the instructions given therein.

Use this user manual for the model indicated on the cover page.



Read the instructions.

## Explanation of symbols

Throughout this user manual the following symbols are used:



Important information or useful hints about usage.



Warning for hazardous situations with regard to life and property.



Warning against electric shock.



Warning against hot surfaces.



Warning against fire hazard.



Packaging materials of the product are manufactured from recyclable materials in accordance with our National Environment Regulations.

Do not dispose of the packaging wastes with the domestic waste or other wastes, discard them to the dedicated collection points designated by the local authorities.



This product was manufactured using the latest technology in environmentally friendly conditions.

# TABLE OF CONTENTS

---

## **1 Important safety and environmental instructions 4**

1.1 General safety .....	4
1.1.1 Electrical safety .....	5
1.1.2 Product safety .....	6
1.2 Mounting over a washing machine .....	8
1.3 Intended use .....	9
1.4 Child safety .....	9
1.5 Compliance with the WEEE regulation and disposing of the waste product .....	10
1.6 Compliance with RoHS Directive: .....	10
1.7 Package information .....	10
1.8 Technical specifications .....	11

## **2 Your Dryer 12**

2.1 Overview .....	12
2.2 Package Contents .....	13

## **3 Installation 14**

3.1 Appropriate installation location .....	14
3.2 Removing the transportation safety assembly .....	14
3.3 Connecting to the drain .....	14
3.4 Under counter installation .....	14
3.5 Adjusting the feet .....	15
3.6 Electrical connection .....	15
3.7 Transportation of the dryer .....	15
3.8 Changing the illumination lamp .....	15

## **4 Electrical Connection 16**

4.1 Attention! .....	16
4.2 Electrical requirements .....	16
4.3 Fitting a different plug .....	16
4.4 Washer/dryer combination .....	16

## **5 Preparation 17**

5.1 Laundry suitable for drying in the dryer	17
5.2 Laundry not suitable for drying in the dryer .....	17
5.3 Preparing laundry for drying .....	17
5.4 Things to be done for energy saving ..	17
5.5 Correct load capacity .....	18

## **6 Selecting a Programme and Operating Your Machine 19**

6.1 Control panel .....	19
6.2 Preparation of the dryer .....	20
6.3 Programme selection .....	20
6.4 Main programmes .....	20
6.5 Special programmes .....	21
6.6 Programme selection and consumption table .....	22
6.7 Auxiliary function .....	23
6.8 Warning indicators .....	23
6.9 Time delay .....	23
6.10 Cancelling the time delay .....	23
6.11 Starting the programme .....	23
6.12 Progress of programme .....	23
6.13 Changing the programme after it has started .....	24
6.14 Child-proof lock .....	25
6.15 Finishing by cancelling the programme .....	26
6.16 End of programme .....	26

## **7 Maintenance and cleaning 27**

7.1 Cleaning Lint Filter / Loading Door Inner Surface .....	27
7.2 Cleaning the sensor .....	27
7.3 Draining the water tank .....	28
7.4 For the condenser .....	28

## **8 Troubleshooting 30**

## **9 Service 31**

---

# 1 Important safety and environmental instructions

This section contains safety instructions that will help protect from risk of personal injury or property damage. Failure to follow these instructions shall void any warranty.

## 1.1 General safety

- The dryer can be used by children at and above 8 years old and by persons whose physical, sensory or mental capabilities were not fully developed or who lack experience and knowledge provided that they are supervised or trained on the safe usage of the product and the risks it brings out. Children should not play with the product. Cleaning and maintenance works should not be performed by children unless they are supervised by someone.
- Children of less than 3 years should be kept away unless continuously supervised.
- Adjustable feet should not be removed. The gap between the dryer and the floor should not be reduced with materials such as carpet, wood and tape. This will cause problems with the dryer.
- Always have the installation and repairing procedures carried out by the **Authorised Service**. Manufacturer shall not be held liable for damages that may arise from procedures carried out by unauthorised persons.
- Never wash the dryer by spraying or pouring water onto it! There is the risk of electric shock!

# Important instructions for safety and environment

## 1.1.1 Electrical safety



Electrical safety instructions should be followed while electrical connection is made during the installation.



The appliance must not be supplied through an external switching device, such as a timer, or connected to a circuit that is regularly switched on and off by utility.

- Connect the dryer to a grounded outlet protected by a fuse at the value specified on the type label. Have the grounding installation performed by a qualified electrician. Our company shall not be liable for any damages that will arise when the dryer is used without grounding in accordance with the local regulations.
- The voltage and allowed fuse protection is stated on the type label plate.
- The voltage specified on the type label must be equal to your mains voltage.
- Unplug the dryer when it is not in use.
- Unplug the dryer from the mains during installation, maintenance, cleaning and repair works.
- Do not touch the plug with wet hands! Never unplug by pulling on the cable, always pull out by grabbing the plug.
- Do not use extension cords, multi-plugs or adaptors to connect the dryer to power supply in order to decrease the risk of fire and electric shock.
- Power cable plug must be easily accessible after installation.



Damaged mains cable should be changed by an Authorised Service agent.



If the dryer is faulty, it must not be operated unless it is repaired by an authorised service agent! There is the risk of electric shock!

# Important instructions for safety and environment

## 1.1.2 Product safety



Superheating of the clothes inside of the dryer can occur if you cancel the programme or in the event of a power failure whilst the dryer is running, this concentration of heat can cause self-combustion and fire so always activate the ventilation programme to cool down or quickly remove all laundry from the dryer in order to hang them up and dissipate the heat.



### **Points to be taken into consideration for fire hazard:**

Below specified laundry or items must not be dried in the dryer because of fire hazard.

- Unwashed laundry items
- Items soiled with oil, acetone, alcohol, fuel oil, kerosene, stain removers, turpentine, paraffin or solvents must be washed in hot water with plenty of detergent before being dried in the dryer.



### **Below specified laundry or items must not be dried in the dryer due to the fire hazard:**

- Garments or pillows bolstered with rubber foam (latex foam), shower caps, water resistant textiles, materials with rubber reinforcement and rubber foam pads.
- Clothing cleaned with industrial chemicals.

Items such as lighters, matches, coins, metal parts, needle etc. may damage the drum set or may lead to functional problems. Therefore check pockets off the laundry that you will load into your dryer.

Never stop your dryer before the programme completes. If you must do this, remove all laundry quickly and lay them out to dissipate the heat.

# Important instructions for safety and environment



Clothes that are washed inadequately may ignite on their own and even may ignite after drying ends.

- You must provide enough ventilation in order to prevent gases exiting from devices operating with other types of fuels including the naked flame from accumulating in the room due to the back fire effect.



Clothing that contains metal reinforcements should not be dried in the dryer. Dryer may be damaged if metal reinforcements come loose and break off during drying.



Use softeners and similar products in accordance with the instructions of their manufacturers.



Always clean the lint filter before or after each loading. Never operate the dryer without the lint filter installed.

- Never attempt to repair the dryer by yourself. Do not perform any repair or replacement procedures on the product even if you know or have the ability to perform the required procedure unless it is clearly suggested in the operating instructions or the published service manual. Otherwise, you will be putting your life and others' lives in danger.
- There must not be a lockable, sliding or hinged door that may block the opening of the loading door in the place where your dryer is to be installed.
- Install your dryer in a suitable place that is dry, well ventilated and unlikely to get below 5 degrees Centigrade.
- Make sure that pets do not enter the dryer. Check the inside of the dryer before operating it.
- Do not lean on the loading door of your dryer when it is open, otherwise it may fall over.

# Important instructions for safety and environment

- The lint must not be allowed to accumulate around the tumble dryer.

## 1.2 Mounting over a washing machine

- A fixing device should be used between the two machines when installing the dryer above a washing machine. The fitting device can be obtained through spare part suppliers.
- Total weight of the washing machine and the dryer -with full load- when they are placed on top of each other reaches to approx. 180 kilograms. Place the products on a solid floor that has sufficient load carrying capacity!



Washing machine cannot be placed on the dryer. Pay attention to the above warnings during the installation on your washing machine.

Installation Table for Washing Machine and Dryer							
Dryer Depth	Washing Machine Depth						
	62 cm	60 cm	54 cm	50 cm	49 cm	45 cm	40 cm
54 cm	Can be stacked					Can be stacked	Cannot be stacked
60 cm	Can be stacked					Cannot be stacked	



# Important instructions for safety and environment

## 1.3 Intended use

- Dryer has been designed for domestic use. It is not suitable for commercial use and it must not be used out of its intended use.
- Use the dryer only for drying laundry that are marked accordingly.
- The manufacturer waives any responsibility arisen from incorrect usage or transportation.
- Original spare parts will be available to repair the dryer for a period of 10 years.

## 1.4 Child safety

- Packaging materials are dangerous for the children. Keep packaging materials away from children.
- Electrical products are dangerous for the children. Keep children away from the product when it is operating. Do not let them tamper with the dryer. Use the child-proof lock in order to prevent the children to tamper with the dryer.

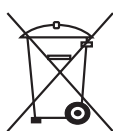


Child-proof lock is on the control panel.  
**(See Child lock)**

- Keep loading door closed even when the dryer is not in use.

# Important instructions for safety and environment

## 1.5 Compliance with the WEEE regulation and disposing of the waste product



This product complies with EU WEEE Directive (2012/19/EU). This product bears a classification symbol for waste electrical and electronic equipment (WEEE).

This product has been manufactured with high quality parts and materials which can be reused and are suitable for recycling. Do not dispose of the waste product with normal domestic and other wastes at the end of its service life. Take it to the collection center for the recycling of electrical and electronic equipment. Please consult your local authorities to learn about these collection centers.

## 1.6 Compliance with RoHS Directive:

The product you have purchased complies with EU RoHS Directive (2011/65/EU). It does not contain harmful and prohibited materials specified in the Directive.

## 1.7 Package information

Packaging materials of the product are manufactured from recyclable materials in accordance with our National Environment Regulations. Do not dispose of the packaging materials together with the domestic or other wastes. Take them to the packaging material collection points designated by the local authorities.

# Important instructions for safety and environment




## 1.8 Technical Specifications

EN	
Height (Min. / Max.)	84,6 cm / 86,6 cm*
Width	59,5 cm
Depth	59,8 cm
Capacity (max.)	8 kg**
Weight (net)	37 kg
Voltage	See rating label***
Rated power input	
Model code	

\* Min. height: Height with adjustable feet are closed.  
Max. height: Height with adjustable feet are opened maximum.

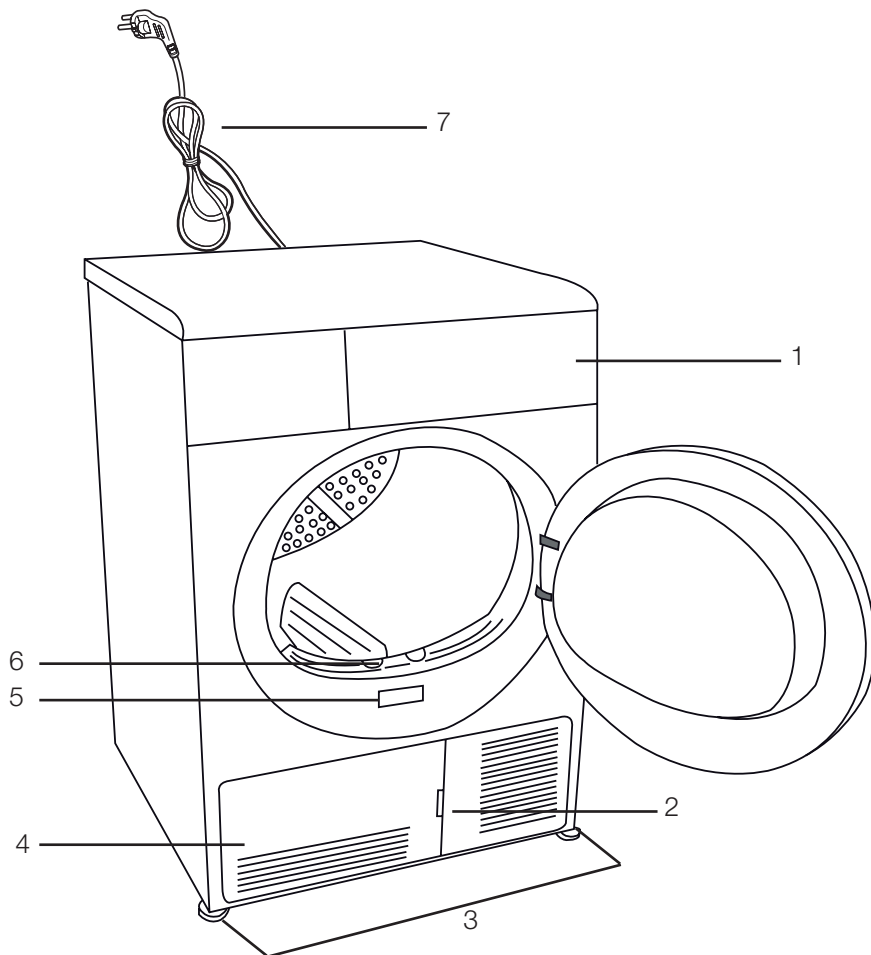
\*\* Dry laundry weight before washing.

\*\*\* For the location of the type label on the dryer (**see 2.1 Overview.**)

	Technical specifications of the dryer are subject to specification without notice to improve the quality of the product.
	Figures in this manual are schematic and may not match the product exactly.
	Values stated on markers on the dryer or in the other published documentation accompanying with the dryer are obtained in laboratory in accordance with the relevant standards. Depending on operational and environmental conditions of the dryer, these values may vary.

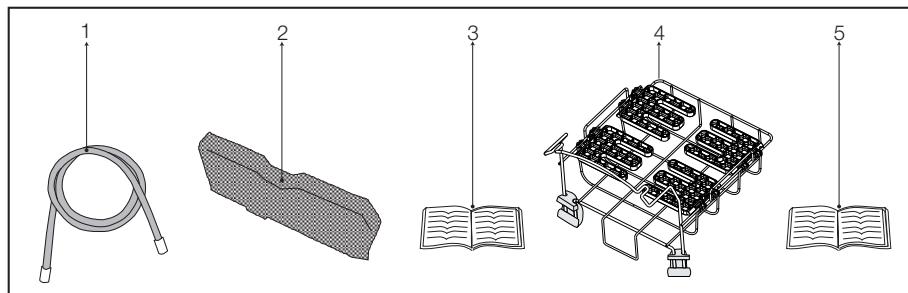
## 2 Your Dryer

### 2.1 Overview



- 1- Control panel
- 2- Kick plate opening tab
- 3-Adjustable feet
- 4-Kick plate
- 5- Rating plate
- 6- Fluff filter
- 7- Power cord

### 2.2 Package Contents



1. Water drain hose \*
2. Filter drawer spare sponge\*
3. User Manual
4. Drying basket\*
5. Drying basket user manual\*

\*It can be supplied with your machine depending on its model.

## 3 Installation

Before calling the nearest Authorised Service for the installation of the dryer, ensure that electrical installation and water drain is appropriate referring to the user's manual. **(See 3.4 Connecting to the drain and 3.6 Electrical connection)** If they are not suitable, contact a qualified electrician and technician to make necessary arrangements.



Preparation of the dryer's location as well as the electrical and waste water installations is under customer's responsibility.



Prior to installation, visually check if the dryer has any defects on it. If the drier is damaged, do not have it installed. Damaged products cause risks for your safety.

### 3.1 Appropriate installation location

- Install the dryer on a stable and level surface.
- Dryer is heavy. Do not move it by yourself.
- Operate your dryer in a well ventilated, dust-free environment.
- The gap between the dryer and the surface should not be reduced by the materials such as carpet, wood and tape.
- Do not cover the ventilation grills of the dryer.
- There must not be a lockable, sliding or hinged door that may block the opening of the loading door in the place where your dryer is to be installed.
- Once the dryer is installed, it should stay at the same place where its connections have been made. When installing the dryer, make sure that its rear wall does not touch anywhere (tap, socket, etc.).
- Place the dryer at least 1 cm away from the edges of other furniture.
- Your dryer can be operated at temperatures between +5°C and +35°C. If the operating conditions fall outside of this range, operation of the dryer will be adversely affected and it can get damaged.
- The rear surface of the tumble dryer shall be placed against a wall.



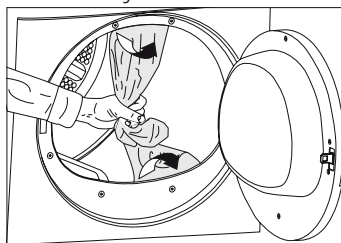
Do not place the dryer on the power cable.

### 3.2 Removing the transportation safety assembly



Remove the transportation safety assembly before using the dryer for the first time.

- Open the loading door.
- There is a nylon bag inside the drum that contains a piece of styrofoam. Hold it from its section marked with **XX XX**.
- Pull the nylon towards yourself and remove the transportation safety assembly.



Check that no part of the transportation safety assembly remains inside the drum.

### 3.3 Under counter installation

- The product should never be operated without the top trim.
- Leave at least 3 cm of space between the side and rear walls of the product and the walls of the counter/cupboard when installing your product under a counter or in a cupboard.

### 3.4 Connecting to the drain

In products equipped with condenser unit, water accumulates in the water tank during the drying cycle. You should drain accumulated water after each drying cycle. You can directly drain accumulated water through the water drain hose supplied with the product instead of periodically draining the water collected in the water tank.

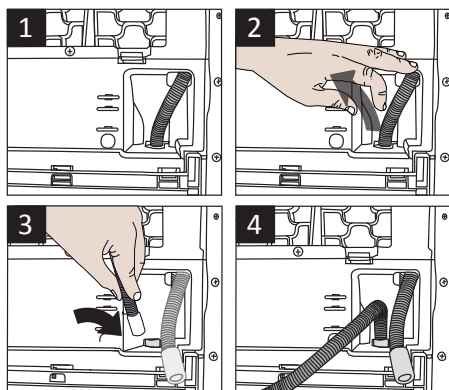
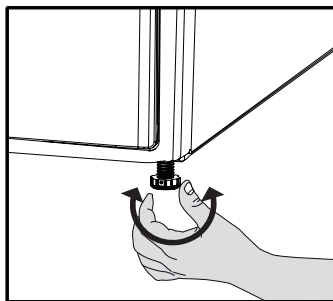
## Installation

### Connecting the water drain hose

**1-2** Pull hose at the behind of the dryer by hand in order to disconnect it from where it is connected. Do not use any tools to remove the hose.

**3.** Connect one end of the drain hose supplied with the dryer to the connection point from where you removed the hose of the product in previous step.

**4.** Connect the other end of the drain hose directly to the wastewater drain or to the washbasin.



Never unscrew the adjustable feet from their housings.

### 3.6 Electrical connection

For specific instructions for electrical connection required during installation (see **1.1.1 Electrical Safety**)

### 3.7 Transportation of the dryer

Unplug the dryer before transporting it. Drain all water that has remained in the dryer. If direct water drain connection is made, then remove the hose connections.



We recommend carrying the dryer in upright position. If it is not possible to carry the machine in the upright position, we recommend carrying it by tilting towards the right side when looked from the front.

### 3.8 Changing the illumination lamp

In case an illumination lamp is used in your laundry dryer  
To change the Bulb/LED used for illumination of your tumble dryer, call your Authorised Service.

The lamp(s) used in this appliance is not suitable for household room illumination. The intended purpose of this lamp is to assist the user to place laundry in the tumble dryer in a comfortable way. The lamps used in this appliance have to withstand extreme physical conditions such as vibrations and temperatures above 50 °C.



Hose connection should be made in a safe manner. Your house will be flooded if the hose comes out of its housing during water discharge.



Water drain hose should be attached to a height of maximum 80 cm.



Make sure that the water drain hose is not stepped on and it is not folded between the drain and the machine.

### 3.5 Adjusting the feet

In order to ensure that the dryer operates more silently and vibration-free, it must stand level and balanced on its feet. Balance the machine by adjusting the feet. Turn the feet to left or right until the dryer stands level and firmly.

## 4 Electrical Connection

Make sure that you have an earthed power outlet socket rated at 13 amps (minimum).

### 4.1 Attention!

When installed, the socket must be reachable after installation, or a separate switch (which can disconnect the two poles) must be used in the installation. Check for suitability. For a permanent connection, a master switch with at least 3mm contact clearance and minimum 13 A rating must be used.

### 4.2 Electrical requirements

Before you insert the plug into the wall socket make sure that the voltage and the frequency shown in the rating label corresponds to your electricity supply. We recommend that this appliance be connected to the mains supply via a suitable switched and fused socket in a readily accessible position. Should the mains lead of the appliance become damaged or need replacing at any time, it must be replaced by a special purpose made mains lead which can only be obtained from a Authorised Service Agent.



### Warning

This appliance must be earthed. If the fitted moulded plug is not suitable for your socket, then the plug should be cut off and an appropriate plug fitted. The moulded plug on this appliance incorporates a 13A fuse. Should the fuse need to be replaced an ASTA approved BS1362 fuse of the same rating must be used. Do not forget to refit the fuse cover. In the event of losing the fuse cover, the plug must not be used until a replacement fuse cover has been fitted. Colour of the replacement fuse cover must be the same colour as that visible on the pin face of the plug. Fuse covers are available from any good electrical store. In order to avoid hazards, damaged supply cord should be replaced by the manufacturer, its service agent or similarly qualified people. Built-under installation  
This appliance can be installed under a worktop.



Do not operate without the top cover fitted. Risk of injury.



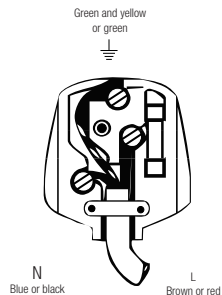
### Important

### 4.3 Fitting a different plug

As the colours of the wires in the mains lead of this appliance may not correspond with the coloured markings identifying the terminals on your plug, proceed as follows:

- 1 Connect the green - yellow or green (earth) wire to the terminal in the plug marked 'E' or with the symbol or coloured green and yellow or green.
- 2 Connect the blue (neutral) wire to the terminal in the plug marked 'N' or coloured black.
- 3 Connect the brown (live) wire to the terminal in the plug marked 'L' or coloured red.

With the alternative plugs a 13A fuse must be fitted either in the plug or adaptor or in the main fuse box. If in doubt contact a qualified electrician.



### 4.4 Washer/dryer combination

Do not stack washing machine on top of the tumble dryer. This would damage both appliances and guarantees would become void. It is also unsafe to stack an appliance on top of another without using a suitable and approved stacking kit obtained from the manufacturer of the appliances.

- A special stacking kit is required as an optional extra please contact customer service.



## 5 Preparation

### 5.1 Laundry suitable for drying in the dryer

Always obey the instructions given on the garment tags. Dry only the laundry having a label stating that they are suitable for drying in a dryer and make sure that you select the appropriate programme.

LAUNDRY DRYING SYMBOLS											
	Drying Symbols										
	Drying Settings										
	Iron -										
	Dry or Steam		Iron at high temperature	Iron at medium temperature	Iron at low temperature						
	Maximum temperature		200 °C	150 °C	110 °C						
						Do not iron				Iron without steam	

### 5.2 Laundry not suitable for drying in the dryer



Delicate embroidered fabrics, woollen, silk garments, delicate and valuable fabrics, airtight items and tulle curtains are not suitable for machine drying.

### 5.3 Preparing laundry for drying

- Laundry may be tangled with each other after washing. Separate the laundry items before placing them into the dryer.
- Dry garments having metal accessories such as zippers, inside out.
- Fasten the zippers, hooks and buckles and button sheets.

### 5.4 Things to be done for energy saving

Following information will help you use the dryer in an ecological and energy-efficient manner.

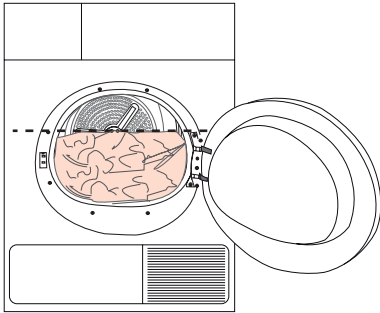
- Spin your laundry at the highest speed possible when washing them. Thus, the drying time is shortened and energy consumption is reduced. Sort out the laundry depending on their type and thickness. Dry the same type of laundry together. For example thin kitchen towels and table clothes dries earlier than thick bathroom towels.
- Follow the instructions in the user manual for programme selection.
- Do not open the loading door of the machine during drying unless necessary. If you must certainly open the loading door, do not to keep it open for a long time.
- Do not add wet laundry while the dryer is in operation

## Preparation

- Clean the lint filter before or after each drying cycle
- Clean the condenser regularly at least once every month or after every 30 drying cycles.
- Ventilate the room, where the dryer is located, well during drying.

### 5.5 Correct load capacity

Follow the instructions in the "Programme selection and consumption table". Do not load more than the capacity values stated in the table.



It is not recommended to load the dryer with laundry exceeding the level indicated in the figure. Drying performance will degrade when the machine is overloaded. Furthermore, dryer and the laundry can get damaged.

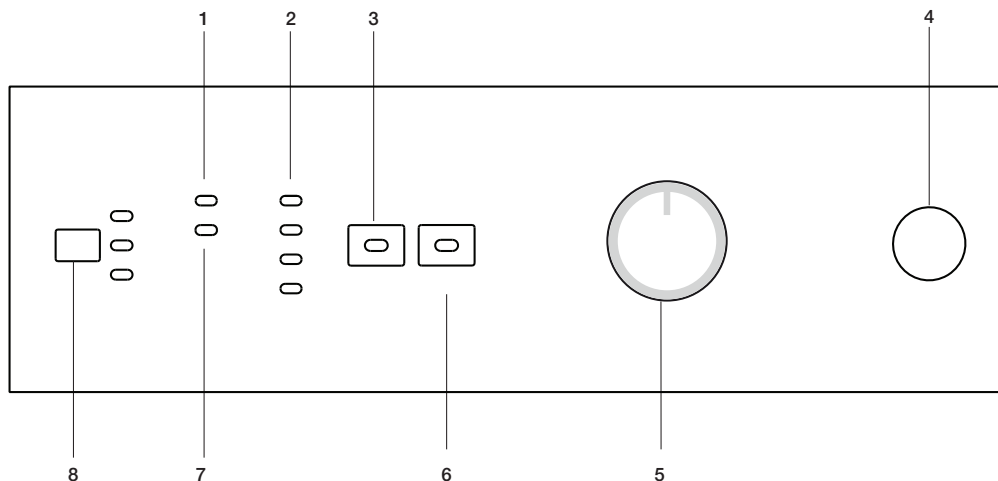
Following weights are given as examples.

Laundry	Approximate weights (g)*
Cotton quit covers (double)	1500
Cotton quit covers (single)	1000
Bed sheets (double)	500
Bed sheets (single)	350
Large tablecloths	700
Small tablecloths	250
Tea napkins	100
Bath towels	700
Hand towels	350
Blouses	150
Cotton shirts	300
Shirts	250
Cotton dresses	500
Dresses	350
Jeans	700
Handkerchiefs (10 pieces)	100
T-Shirts	125

\*Dry laundry weight before washing.

## 6 Selecting a Programme and Operating Your Machine

### 6.1 Control panel



**1. Filter cleaning warning light**

Warning light turns on when the filter is full.

**2. Programme follow-up indicator**

Used to follow-up the progress of the current programme.

**3. Cancel audio warning**

Used to cancel the audio warning given at the end of the programme.

**4. On/Off button**

Used to turn on and off the machine.

**5. Programme selection knob**

Used to select a programme.

**6. Start/Pause/Cancel button**

Used to start, pause or cancel the programme.

**7. Water tank warning light**

Warning light turns on when the water tank is full.

**8. Time delay selection button**

Used to set the time delay.

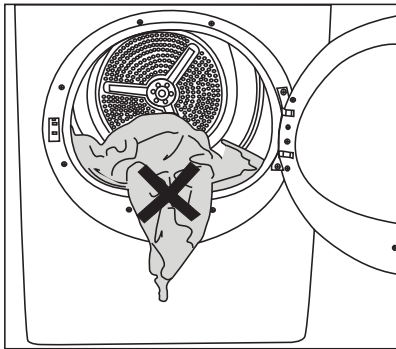
## Selecting a Programme and Operating Your Machine

### 6.2 Preparation of the dryer

- Plug in the dryer.
- Open the loading door.
- Place the laundry in the machine without compressing.
- Push the loading door to close.



Ensure that no items are caught in the loading door.



- Press the "On/Off" button.



Pressing the "On/Off" button does not necessarily mean that the programme has started. Press "Start/Pause/Cancel" button of the machine to start the programme.

### 6.3 Programme selection

Decide the appropriate programme from the table below which includes drying temperatures in degrees. Select the desired programme with the programme selection button.

Extra dry	Dry at high temperature only for cotton laundry. Thick and multi layered laundry (E.g.: towels, linens, jeans) are dried in a way that they do not require ironing before placing in the wardrobe.
-----------	--

Cupboard dry	Normal laundry (E.g.: tablecloths, underwear) are dried in a way that they do not require ironing before placing in the drawers.
Normal dry	Normal laundry (E.g.: tablecloths, underwear) are dried in a way that they do not require ironing before placing in the drawers, but more than those in the ready to wear option.
Iron Dry	Normal laundry (E.g., Shirts, dresses) are dried ready to be ironed.



For further programme details, see, "Programme Selection Table"

### 6.4 Main programmes

Depending on the type of laundry, the following main programmes are available:

#### Cottons

You can dry your durable laundry with this programme. Dries at high temperature. It is recommended to use for your cotton items (such as bed sheets, quilt cover, underclothing, etc.).

#### Synthetics

You can dry your less durable laundry with this programme. It dries at a lower temperature compared to the cottons programme. It is recommended for your synthetic laundry (such as shirts, blouses, synthetic/cotton blended laundry, etc.).



Do not dry curtains and lace in your machine.

#### Anti-creasing

A 2-hour anti creasing programme to prevent laundry from creasing will be activated if you do not take the laundry out after the programme is over. This programme rotates the laundry in 10-minute intervals to prevent creasing.

## Selecting a Programme and Operating Your Machine

### 6.5 Special programmes

For special cases, there are also extra programmes available:



Additional programmes may differ according to the model of your machine.

#### •Xpress 35' min.

You can use this programme to dry the cottons that are spun at high speeds in your washing machine. It can dry your 2 kg Cotton laundry (3 Shirts / 5 T-Shirts) within 35 minutes.



In order to obtain better results from the dryer programmes, your laundry must be washed with suitable programme and spun at the recommended spin speeds in your washing machine.

#### •Shirts

Dries the shirts in a more sensitive way so that they are less creased and ironed easily.



Shirts may contain little amount of dampness at the end of the programme. It is advised not to leave the shirts in the dryer.

#### •Jeans

You can use this programme to dry the jeans that are spun at high speeds in your washing machine.



Review the relevant part of the programme table.

#### •Delicates

You can dry at a lower temperature your very delicate laundry (silk blouses, fine underwear, etc.) that are suitable for drying or laundry which is advised to be hand-washed.



It is recommended to use a cloth bag to avoid certain delicate garments and laundry from getting creased or damaged. Take your garments immediately out of the dryer and hang them after the programme ends in order to prevent them being creased.

#### •Freshen Up






Only ventilation is performed for 10 minutes without blowing hot air. You can air your clothes that have been kept at closed environments for a long time thanks to this programme to deodorize unpleasant odours.

#### •Timer programmes

You can select one of the 10 min., 20 min., 40 min. and 60 min. timer programmes to achieve the desired final drying level at low temperatures. Programme dries at the selected time regardless of the drying temperature.

# Selecting a Programme and Operating Your Machine

## 6.6 Programme selection and consumption table

EN					
Programmes	Capacity (kg)	Spin speed in washing machine (rpm)	Approximate amount of remaining humidity	Drying time (minutes)	
Cottons / Coloreds					
 Cupboard dry	8 / 4	1000	% 60	137 / 78	
 Normal dry	8	1000	% 60	142	
 Iron dry	8	1000	% 60	105	
Xpress 35' min	2	1200	% 50	35	
Shirts	1,5	1200	% 50	40	
Jeans	4	1200	% 50	80	
Synthetics					
 Cupboard dry	4	800	% 40	53	
Delicates					
 Cupboard dry	2	600	% 40	40	
Energy consumption values					
Programmes	Capacity (kg)	Spin speed in washing machine (rpm)	Approximate amount of remaining humidity	Energy consumption value kWh	
Cottons cupboard dry*	8 / 4	1000	% 60	4,71 / 2,54	
Cottons iron dry	8	1000	% 60	3,80	
Synthetics cupboard dry	4	800	% 40	1,80	
Power consumption of the off-mode for the standard cotton programme at full load, PO (W)				0,3	
Power consumption of the left-on mode for the standard cotton programme at full load, PL (W)				1,0	



„Cotton cupboard dry programme“ used at full and partial load is the standard drying programme to which the information in the label and the fiche relates, that this programme is suitable for drying normal wet cotton laundry and that it is the most efficient programme in terms of energy consumption for cotton.

\* : Energy Label standard programme (EN 61121:2012) All the filters must be cleaned prior to test series.

All values given in the table have been fixed according to EN 61121:2012 Standard. These values may deviate from the table according to the laundry type, laundry spin speed, environmental conditions and voltage fluctuations.

## Selecting a Programme and Operating Your Machine

### 6.7 Auxiliary function Cancel audio warning

Your dryer will give an audio warning when the programme comes to an end. If you do not want to hear the audio warning, press "Cancel Audio Warning" button. The relevant light will turn on when this button is pressed and an audio warning will not be given when the programme comes to an end.



You can select this function either before or after the programme starts.

### 6.8 Warning indicators



Warning indicators may differ according to the model of your dryer.

#### Filter cleaning

A warning light will turn on to remind filter cleaning after the programme finishes.



If the filter cleaning warning light lights up continuously, please refer to, "Suggested solutions for problems".

#### Water tank

Warning light starts flashing when the tank is filled with water. The dryer stops operating if the warning light turns on when a programme is running. Drain the water in the water tank to restart the dryer. Press "Start/Pause/Cancel" button to start the programme after you have emptied the water tank. The warning light turns off and the programme resumes operating.

### 6.9 Time delay

If you wish to dry your clothes at a later time, thanks to the time delay function, you can delay the programme start up to 3 hours, 6 hours or 9 hours.

- Open the loading door and put the laundry in.



Make sure that all air outlets are open, door filter is cleaned and the water tank is empty.

- Set the drying programme and, if required, the auxiliary functions.
- When the time programming button is pressed once, a 3 hour delay is selected and the relevant led lights. When the same button is pressed again, 6 hours; and if pressed once more, 9 hours delay will be selected. If the time programming button is pressed one more time, time delaying function will be cancelled. Set the time delay as you require.
- Delayed operation of the selected programme is started by pressing the "Start/Pause/Cancel" button after selecting the time delay.



Additional laundry may be loaded / taken out during the time delay period.



During the time delay period, laundry is rotated for 4 seconds in every 10 minutes to prevent creasing.

### 6.10 Cancelling the time delay

If you want to cancel the time delay countdown and start the programme:

- Press "Start/Pause/Cancel" button for about 3 seconds.
- Press "Start/Pause/Cancel" button to start the programme right away.
- 

### 6.11 Starting the programme

- Press "Start/Pause/Cancel" button to start the programme.
- Light of the "Start/Pause/Cancel" button will turn on to indicate that the programme has started.

### 6.12 Progress of programme

Progress of a running programme is shown through the programme follow-up indicator. At the beginning of every programme step, the relevant indicator LED will light up and light of the completed step will turn off.

#### "Drying":

- Drying level will be illuminated during the whole drying process until the drying degree reaches "iron dry".

## Selecting a Programme and Operating Your Machine

### **"Iron Dry":**

- Starts to illuminate when the drying degree reaches "iron dry" step and remains illuminated until the next step.

### **"Cupboard dry":**

Starts to illuminate when the drying degree reaches "Ready to wear" step and remains illuminated until the next step.

### **"Final / Anti-creasing":**

- Illuminates when the programme comes to an end and anti-creasing function is activated.



If more than one LED light up or flash concurrently, it means there is malfunctioning or a failure (please see, Solution suggestions for problems).

## 6.13 Changing the programme after it has started

You can use this feature to dry your clothes under higher or lower temperatures after your dryer has started.

For example;

- Press and hold the "Start/Pause/Cancel" button for about 3 seconds to "Cancel" the programme in order to select "Extra Dry" programme instead of "Iron Dry" programme.
- Select the "Extra Dry" programme by rotating the programme selection button.
- Press "Start/Pause/Cancel" button to start the programme.



Press "Start/Pause/Cancel" button for 3 seconds to cancel the programme or turn the programme selection knob in any direction to end the programme while the machine is running. Water tank and filter cleaning warning lights turn on to warn the user when the programme is cancelled by pressing the "Start/Pause/Cancel" button for 3 seconds. However, the warning lights do not turn on when the programme is cancelled by turning the programme selection knob. Only the drying light turns on and the machine remains in hold until a new programme is selected and the "Start/Pause/Cancel" button is pressed. Child-proof lock of the machine should not be active in order to perform these two operations. If the child-proof lock is active, deactivate it before performing these operations.



## Selecting a Programme and Operating Your Machine

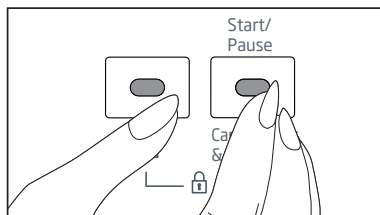
### Adding/removing laundry in standby mode

In order to add or remove laundry after the programme starts:

- Press the "Start/Pause/Cancel" button to switch the dryer to "Pause" mode. Drying process will stop.
- Open the door at "Pause" position and close it again after adding or taking out laundry.
- Press "Start/Pause/Cancel" button to start the programme.



Child-proof lock is deactivated when the machine is restarted by pressing the On/Off button.



Any laundry added after the drying process has started may cause the dried clothes in the machine intermingle with wet clothes and the result will be wet laundry after the drying process is over.



Laundry may be added or taken out as much as desired during a drying process, but this process will extend the programme duration and increase energy consumption since the drying will be interrupted continuously. Therefore, it is recommended to add laundry before the drying programme has started.



Press the relevant buttons for 3 seconds to activate the child-proof lock. A long beep will be heard and the child-proof lock will be activated. A double beep will be heard if you press any button or turn the programme selection knob while the child-proof lock is active. Press the buttons for 3 seconds to deactivate the child-proof lock. Single beep will be heard and child-proof lock will be deactivated.



A double beep will be heard if you turn the programme selection knob when the machine is running and the child-proof lock is active. If you deactivate the child-proof lock without returning the programme selection knob to its previous position, the programme will be terminated since the position of the programme selection knob is changed. The drying light turns on and the machine remains on hold until a new programme is selected and the "Start/Pause/Cancel" button is pressed.

### 6.14 Child-proof lock

There is a child-proof lock to prevent any programme interruption due to the pressing of button while the programme is running. The loading door and all buttons except the "On/Off" button on the control panel are deactivated when the child-proof lock is active.

Press the "Start/Pause/Cancel" and "Cancel audio warning" buttons simultaneously for 3 seconds to activate the child-proof lock. To start a new programme after the programme is over or to interrupt the programme, the child-proof lock should be deactivated. Press the same buttons for 3 sec. again to deactivate the child-proof lock.

## Selecting a Programme and Operating Your Machine

### 6.15 Finishing by cancelling the programme

To cancel any selected programme:  
Press "Start/Pause/Cancel" button for about 3 seconds. The "Filter cleaning", "Water tank" and "End/ Anti-creasing" warning lights will turn on at the end of this period for reminding purposes.



As the inside of the dryer will be excessively hot when you cancel the programme while the dryer is running, activate the ventilation programme to cool it down.

### 6.16 End of programme

The "End/Anti-creasing", "Filter cleaning" and "Water tank" warning lights on the programme follow up indicator will turn on when the programme comes to an end. The door can be opened and the machine becomes ready for a second cycle. Press "On/Off" button to turn off the dryer.



Final step of the drying cycle (cooling step) is performed without heat application in order to keep the items at a temperature that would not harm them.



A 2-hour anti creasing programme to prevent laundry from creasing will be activated if you do not take the laundry out after the programme has come to an end.



If you will not take the laundry out immediately, do not stop the dryer before the drying process is complete.



Clean the filter after each drying (please see, Filter cleaning).



Drain the water tank after each drying (please see, Water tank)

## 7 Maintenance and cleaning

Service life of product extends and frequently experienced problems will be reduced if it is cleaned at regular intervals.

### 7.1 Cleaning Lint Filter / Loading Door Inner Surface

Lint and fibre released from the laundry to the air during the drying cycle are collected in the Lint Filter.



Such fibre and lint are generally formed during wearing and washing.



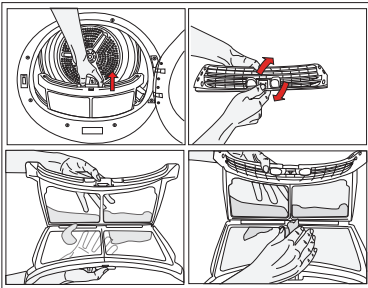
Always clean the lint filter and the inner surfaces of the loading door after each drying process.



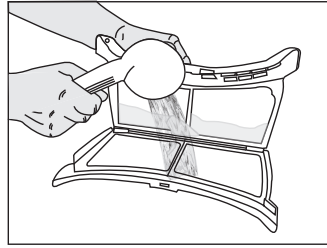
You can clean the lint filter housing with a vacuum cleaner.

To clean the lint filter:

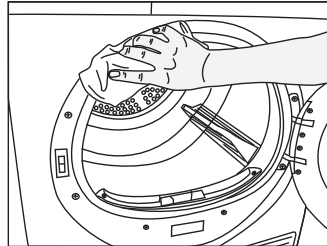
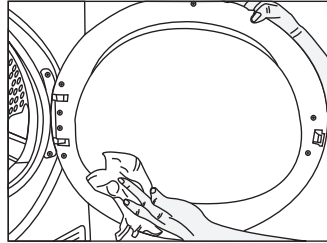
- Open the loading door.
- Remove the lint filter by pulling it up and open the lint filter.
- Clean lint, fibre, and cotton raveling by hand or with a soft piece of cloth.
- Close the lint filter and place it back into its housing.



- A layer can build up on the filter pores that can cause clogging of the filter after using the dryer for a while. Wash the lint filter with warm water to remove the layer that builds up on the lint filter surface. Dry the lint filter completely before reinstalling it.



- Clean the entire inner surface of the loading door and loading door gasket with a soft damp cloth.



### 7.2 Cleaning the sensor

There are dampness sensors in the dryer that detect whether the laundry is dry or not.

To clean the sensors:

- Open the loading door of the dryer.
- Allow the machine to cool down if it is still hot due to the drying process.
- Wipe the metal surfaces of the sensor with a soft cloth, dampened with vinegar and dry them.



Clean metal surfaces of the sensors 4 times a year.

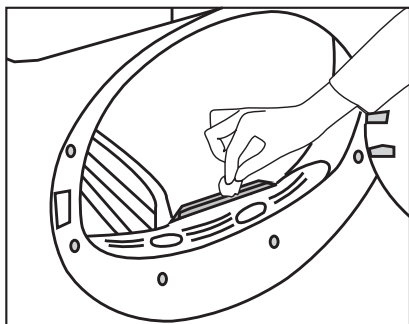
## Maintenance and cleaning



Do not use metal tools when cleaning metal surfaces of the sensors.



Never use solvents, cleaning agents or similar substances for cleaning due to the risk of fire and explosion!



### 7.3 Draining the water tank

Dampness of the laundry is removed and condensed during drying process and the water that arise accumulates in the water tank. Drain the water tank after each drying cycle.



Condensed water is not drinkable!

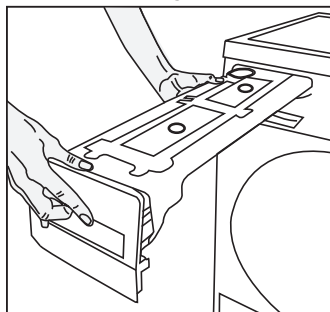


Never remove the water tank when the programme is running!

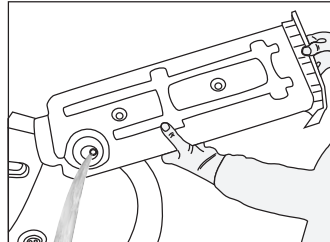
If you forget to drain the water tank, the machine will stop during the subsequent drying cycles when the water tank is full and the Water Tank warning symbol will flash. If this is the case, drain the water tank and press **Start / Pause** button to resume the drying cycle.

To drain the water tank:

- Pull the drawer and remove the water tank carefully.



- Drain the water in the tank.



- If there is lint accumulation in the funnel of the water tank, clean it under running water.
- Place the water tank into its seat.



If the direct water draining is used as an option, there is no need to empty the water tank.

### 7.4 For the condenser

Hot and humid air in the condenser is cooled with the cold air from the room. Thus, the humid air circulating in your dryer is condensed and then pumped into the tank.

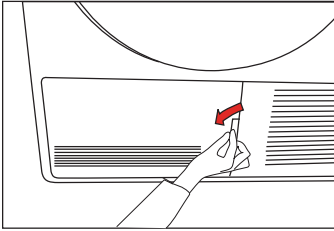


Clean the condenser after every 30 drying cycles or once a month.

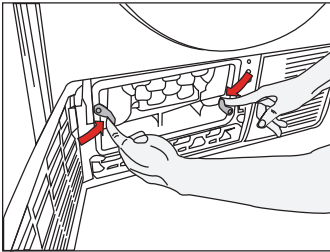
## Maintenance and cleaning

To clean the condenser:

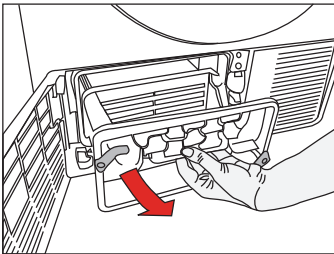
1. If a drying process has been carried out, open the door of the machine and wait until it cools down.



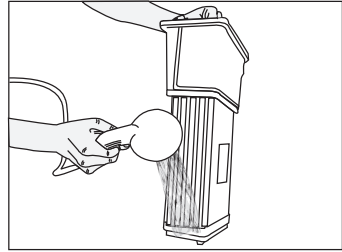
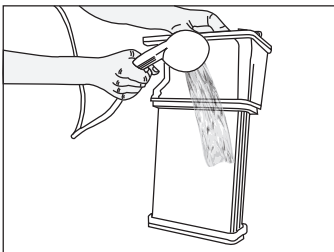
2. Unlock the 2 condenser locks after opening the kick plate.



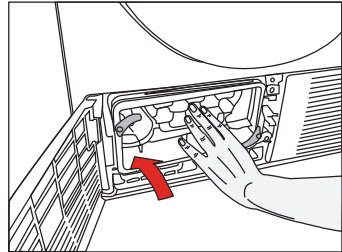
3. Pull out the condenser.



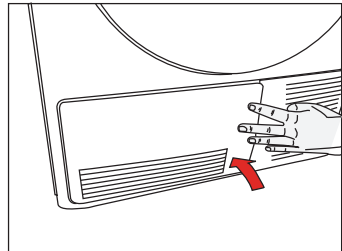
4. Clean the condenser by applying pressurized water with a shower head and wait until the water drains.



5. Place the condenser in its housing. Fasten the 2 locks and make sure that they are seated securely.



6. Close the kick plate cover.



## 8 Troubleshooting

Drying process takes too much time

- Meshes of the filter may be clogged. Wash with water

Laundry comes out wet at the end of drying.

- Meshes of the filter may be clogged. Wash with water.
- Excessive laundry might have been loaded in. Do not load the dryer in excess.

Dryer does not switch on or the programme does not start. Dryer is not activated when set.

- It might have not been plugged in. Make sure that the machine is plugged in.
- The loading door may be ajar. Make sure that the loading door is properly closed.
- Programme might have not been set or the «Start/Pause/Cancel» button might have not been pressed. Make sure that the programme has been set and it is not in "Pause" mode.
- «Childproof lock» might have been activated. Deactivate the childproof lock.

Programme has been interrupted without any cause.

- The loading door may be ajar. Make sure that the loading door is properly closed.
- Electricity may be cut off. Press «Start/Pause/Cancel» button to start the programme.
- Make sure that the condenser cover and the red lock is closed securely.

Laundry has shrunk, become felted or deteriorated.

- A programme suitable for the laundry type might have not been used. Dry only the laundry which is suitable for drying in dryer after checking the labels on your clothes.
- Select a programme with suitable low temperature for the laundry type to dry your clothes.

Drum lightning does not come on. (For models with lamp)

- Dryer might have not been started by using the «On/Off» button. Make sure that the dryer is on.
- Bulb may have blown. Call the authorised service to replace the bulb.

"Final / Anti-creasing" LED flashes.

- The 2-hour anti creasing programme to prevent laundry from creasing might have been activated. Turn off the dryer and take out the laundry.

"Final / Anti-creasing" LED is on.

- Programme has come to an end. Turn off the dryer and take out the laundry.

The "Drying" LED flashes.

- A heat sensor failure has occurred. Dryer ends the programme without heating. Turn off the dryer and take out the laundry. Call your authorised service

"Filter cleaning" LED is on.

- Filter might have not been cleaned. Clean the cover filter.

"Water comes out the cover"

- Clean the entire inner surface of the cover and door gasket.

"Cover opens spontaneously."

- Push it until you hear that it is closed.

For products with a condenser:

"Water tank" warning LED is on.

- Water may be full. Drain the water in the tank.

"Condenser cleaning" LED is on.

- Condenser might have not been cleaned. Clean the filters in the condenser under the kick plate.



Call an authorised service if the problem persists.

## 9 Service

Please keep your purchase receipt or other proof of purchase in a safe place; you will need to have it should the product require attention under guarantee.

You should also complete the details below; it will help us assist you when requesting service. (The model number is printed on the Instruction Booklet and the serial number is printed on the Rating Label affixed to the appliance)

Model No:

Serial No:

Retailer:

Date of purchase:

### Republic of Ireland

All Refrigeration, 01 862 3411

All Cookers

Washing Machines & Dryers, Tumble Dryers

Dishwashers

Before requesting service please check the trouble-shooting guide in the Operating Instructions as a charge may be levied where no fault is found even though your product may still be under guarantee.

### Service once the manufacturers guarantee has expired.

If you have purchased an extended guarantee please refer to the instructions contained within the extended guarantee agreement document. Otherwise please call the appropriate number above where service can be obtained at a charge.

Should you experience any difficulty in obtaining service please contact the Customer Help-Line.

Tel: 0845 600 4911

For service under guarantee simply telephone the appropriate number below.

### UK Mainland & Northern Ireland

Fridges & Freezers 0345 600 4903 or 0845 600 4903

Electric Cookers 0345 600 4902 or 0845 600 4902

Gas & Dual Fuel Cookers

0345 600 4905 or 0845 600 4905

Washing Machines & Tumble Dryers

0345 600 4906 or 0845 600 4906

## Guarantee

Your new product is guaranteed against the cost of breakdown repairs for twelve months from the date of the original purchase.

### What is covered?

- Repairs necessary as a result of faulty materials, defective components or manufacturing defect.
- The cost of functional replacement parts, but excluding consumable items.
- The labour costs of a approved repairer to carry out the repair.

### What is not covered?

- Transit, delivery or accidental damage or misuse and abuse.
- Cabinet or appearance parts, including knobs, flaps, handles or container lids.
- Accessories or consumable items including but not limited to, ice trays, scrapers, cutlery baskets, filters and light bulbs.
- Repairs required as a result of unauthorised repair or inexperienced installation that fails to meet the requirements contained in the user instruction book.
- Repairs to products used on commercial or non-residential household premises.
- Loss of frozen food in freezers or fridge/freezers. (Food loss insurance is often included within your household contents insurance policy, or may be available separately from your retailer).

### Important notes

- Your product is designed and built for domestic household use only.
- The guarantee will be void if the product is installed or used in commercial or non-residential domestic household premises.
- The product must be correctly installed, located and operated in accordance with the instructions contained in the User Instructions Booklet provided.
- Professional installation by a qualified Electrical Domestic Appliance Installer is recommended for all Washing Machines, Tumble Dryers, Dishwashers, Dryers and Electric Cookers
- Gas Cookers must only be installed by a Gas safe registered Gas Installer.
- The guarantee is given only within the boundaries of the United Kingdom and the Republic of Ireland.
- The guarantee is applicable only to new products and is not transferable if the product is resold.
- Disclaims any liability for incidental or consequential damages.
- The guarantee does not in anyway diminish your statutory or legal rights.

Beko plc, Beko House, 1 Greenhill Crescent, Watford, WD18 8QU

Tel: 0845 6004911

Email: [service@beko.co.uk](mailto:service@beko.co.uk)

Fax: 0845 6004922

[www.beko.com](http://www.beko.com)