

beko



**Vacuum Cleaner With
Water Filtration**

User Manual

BKS 9218

Please read this user manual first!



Dear Customer,

Thank you for preferring a Beko product. We hope that you get the best results from your product which has been manufactured with high quality and state-of-the-art technology. Therefore, please read this entire user manual and all other accompanying documents carefully before using the product and keep it as a reference for future use. If you handover the product to someone else, give the user manual as well. Follow all warnings and information in the user manual.

Remember that this operation manual may also apply for other models. Differences between the models are explicitly described in the manual.

Explanation of symbols

Throughout this user manual the following symbols are used:

	Important information or useful hints about usage.
	Warning for hazardous situations with regard to life and property.



This product has been produced in environmentally friendly, modern facilities.

Complies with the WEEE Regulation.



Does not contain PCB.
Made in Turkey

CONTENTS

1 Important safety and environmental instructions	4-5
1.1 General safety	4
1.2 Compliance with the WEEE Directive and disposal of waste products	5
1.3 Package information	5
2 Technical Aspects of your machine	6
2.1 Overview	6
2.1.1 Controls and components	6
2.1.2 Technical data	6
3 Using your machine	7-8
4 Maintenance and Cleaning	9

1 Important safety and environmental instructions

This section contains safety instructions that will help protect from risk of personal injury or property damage.

Failure to follow these instructions invalidates the granted warranty.

1.1 General safety

- This appliance complies with the international security standards.
- This appliance can be used by children aged from 8 years and above and persons with reduced physical, sensory or mental capabilities or lack of experience and knowledge if they have been given supervision or instruction concerning use of the appliance in a safe way and understand the hazards involved. Children shall not play with the appliance. Cleaning and user maintenance shall not be made by children without supervision.
- Do not use it if the power cable or the appliance itself is damaged. Contact an authorized service.
- Your mains power supply should comply with the information supplied on the rating plate of the appliance.
- The mains supply of the appliance must be secured with a minimum 16 A fuse.
- Do not use the appliance with an extension cord.
- In order to prevent the power cable from getting damaged, make sure that it doesn't get stuck, twisted or rub against sharp surfaces.
- Do not touch the appliance or its plug when it is plugged if your hands are damp or wet.
- Do not pull the power cable when unplugging the appliance.
- Do not vacuum flammable materials and when vacuuming cigarette ashes make sure that it got cold.

1 Important safety and environmental instructions

- Do not vacuum water or other liquid materials.
- Protect the appliance from rain, humidity and heat sources.
- Never use the appliance in or near to combustible or inflammable places and materials.
- Unplug the appliance before cleaning and maintenance.
- Do not dip the appliance or its cable in water to clean it.
- Check the hose of the appliance regularly. Do not use if it is damaged and contact an authorized service.
- Do not attempt to dismantle the appliance.
- Only use the original parts or parts recommended by the manufacturer.
- If heavily used for cleaning dust such as cement or grout the dust indicator will lit earlier than expected, in such case replace the dust bag even it is empty.
- Do not use the appliance without filters; otherwise it can get damaged.
- When vacuuming the stairs, the appliance should be located below the user.
- If you store the package material, keep it out of the reach of children.

1.2 Compliance with the WEEE Directive and disposal of waste products



This product does not include harmful and prohibited materials specified in the “Regulation for Supervision of the Waste Electric and Electronic Appliances” issued by the Ministry of Environment and Urban Planning. This appliance conforms to the WEEE regulation. This product has been manufactured with high quality parts and materials which can be reused and are suitable for recycling. Therefore, do not dispose the product with normal domestic waste at the end of its service life. Take it to a collection point for the recycling of electrical and electronic equipment. Ask the local authority in your area for these collection points. Contribute to the preservation of environment and natural sources by taking the used products to the recycling points.

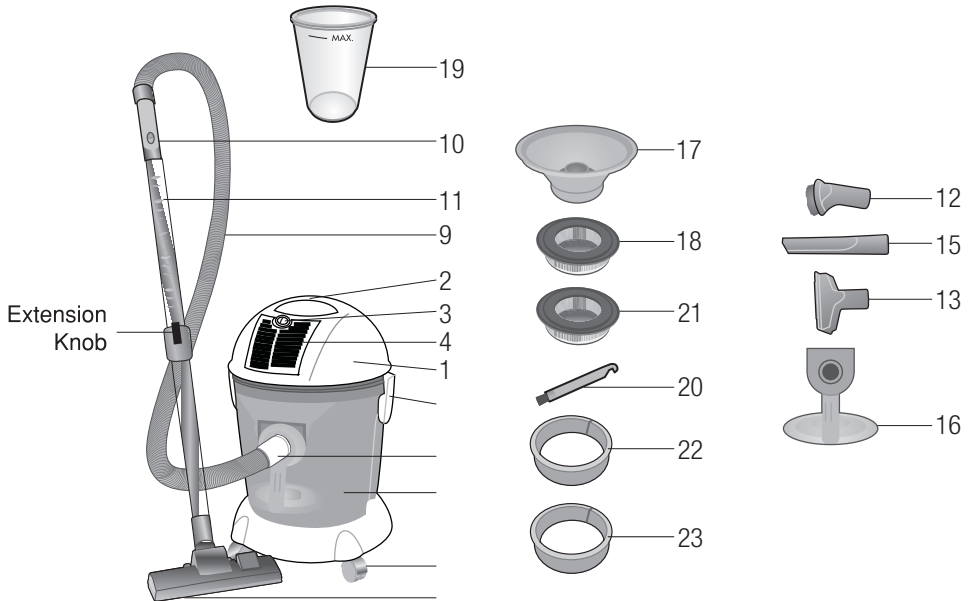
1.3 Package information



Package of the product is made of recyclable materials in accordance with our National Legislation. Do not dispose of the packaging materials together with the domestic or other wastes. Take them to the packaging material collection points designated by the local authorities.

2 Technical Aspects of your machine

2.1 Overview



2.1.1 Controls and components

1. Motor Unit
2. Handle
3. Exhaust Cover Locking / Unlocking Part
4. Exhaust Cover
5. Container
6. Container Locking / Unlocking Part
7. Wheels
8. Hose inlet Part
9. Hose
10. Hose Outlet Part
11. Extension Tubes
12. Small Brush
13. Compact Head
14. Floor Brush
15. Crevice Tool
16. Air Distributing Part
17. Water Separator
18. Hepa Filter
19. Measuring Cup

20. Hepa filter cleaning brush
21. Spare hepa filter
22. Hepa filter sponge
23. Spare hepa filter sponge

2.1.2 Technical data

CE This appliance complies with the European Directives numbered 2004/108/EC, 2006/95/EC, 2009/125/EC, 2010/30/EU and 2011/65/EU.

Gross weight	: 10.4 kg
Net weight	: 6.9 kg
Voltage / Frequency	: 220-240V- 50/60 Hz
Dimensions	: 635x405x405 mm.
Power	: 1800Wmax.
Protection Class	: IPX4
Water/Liquid Suction Capacity	: 11 L

Rights to make technical and design changes are reserved.

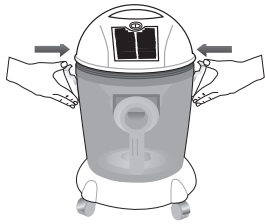
The values which are declared in the markings affixed on your product or the other printed documents supplied with it represent the values which were obtained in the laboratories pursuant to the pertinent standards. These values may vary according to the usage of the appliance and ambient conditions.

3 Using your machine

The appliance was designed to be used in houses, and is not fit for industrial use.

Preparation for Use

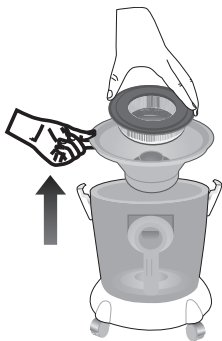
Fill 1,5 liters of water into the container. The water level should not exceed the "MAX" level indicated on the container. Fit the air distributing part by sliding it into its slot located on the container. Put the water separator on the container and place the HEPA filter on top of it. Place the motor unit on the container and secure it by locking the container locking/unlocking parts on each side. Connect the hose to the inlet socket located on the container. Attach the extension tubes, which have been mounted to each other, to the hose handle. You can connect only one extension tube instead of two tubes or you can attach the accessories directly to the hose handle without using any tube.



(Figure 1)



(Figure 2)



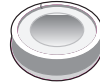
(Figure 3)



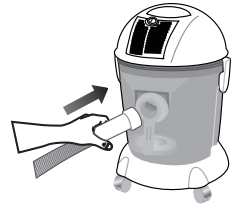
(Figure 4)



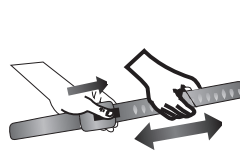
(Figure 5)



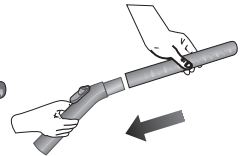
(Figure 6)



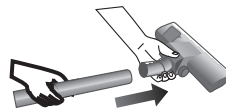
(Figure 7)



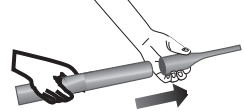
(Figure 8)



(Figure 9)



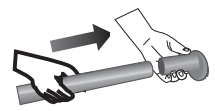
(Figure 10)



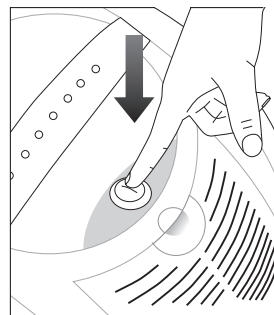
(Figure 11)



(Figure 12)



(Figure 13)



(Figure 14)

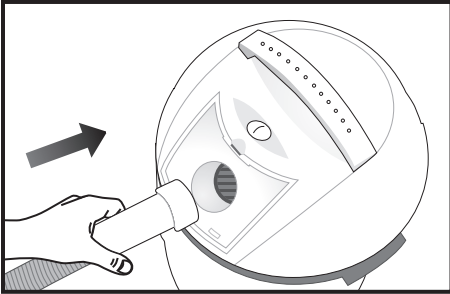
3 Using your machine

Operating the appliance

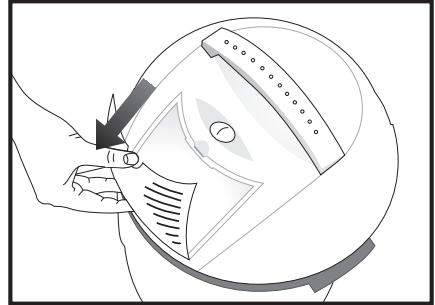
After checking if the voltage meets the rated voltage, plug in the appliance. Press on/off switch (2) located on the top of the appliance. If the water becomes very dirty during cleaning, replace it as described in the "Maintenance and Cleaning the Appliance" section.



CAUTION: This appliance is not a wet&dry vacuum cleaner, but a dry vacuum cleaner with water filtration. Avoid sucking any type of liquid with this vacuum cleaner.



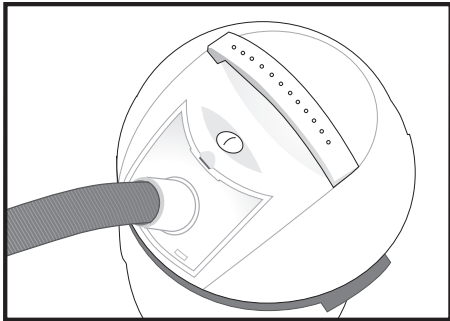
(Figure 16)



(Figure 15)

Blower Function

Remove the blower cover lid and insert the hose into the opening on the body.

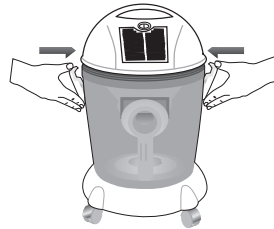


(Figure 17)

4 Maintenance and Cleaning

- To empty the water inside the container, switch off the appliance by pushing on the On/Off switch and disconnect the power supply cable from the mains.
- Remove the motor unit after unlocking the container locking/unlocking parts on each side of the container.
- Remove the water separator and the air distributing part.
- Empty the water inside the container by tilting it towards the opposite side of the inlet socket. You can use the handle of the container.
- It is strongly recommended to dump the water inside the container and to wash out any dirt that might be remaining inside the container after each use.
- It is recommended to wipe inside the container with a dry cloth after washed.
- You may wash the HEPA filter under the water.
- It is recommended that the vacuum cleaner is stored without water inside the container. It is best to fill the filtration water (1,5 l) right before the use.

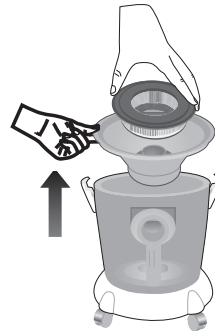
If the vacuum cleaner overturns accidentally during operation, switch the unit off and unplug immediately. Dump the water inside the container and follow the cleaning procedure described in "Maintenance and Cleaning the Appliance" section, above. Make sure that all the parts have been dried before using the appliance again.



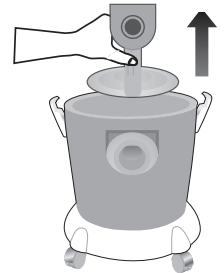
(Figure 1)



(Figure 2)



(Figure 3)



(Figure 4)



WARNINGS: Please make sure that the air distributing part and water separator parts are always in place when the vacuum cleaner is operated.

